

Riley Fite



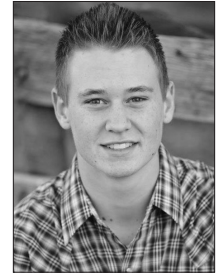
Marissa Green



Lindy Lunt



Heather Udall



Weston Wiltbank

## Students Headed to Youth Tour

Five local juniors have been awarded the opportunity to learn about electric cooperatives and gain a greater understanding of American prosperity and heritage. Selected to represent Graham County Electric Cooperative for a weeklong trip to Washington D.C., are Riley Fite, Safford; Marissa Green, Thatcher; Lindy Lunt, Pima; Heather Udall, Thatcher; and Weston Wiltbank, Safford.

The Washington Youth Tour requires students to take a written test and complete a 350-word essay on an assigned topic. Finalists are interviewed by a panel of judges. The topic for this year's essay was, "How have electrical cooperatives helped bring prosperity to rural America?"

The five students will join an Arizona delegation of 50 students and chaperones at the 2014 Washington Youth Tour. The national delegation includes 1,500 high school juniors and provides them with the opportunity to see Congress in action. Students are taught the importance of our nation's history and the democratic process.

### Riley Fite

For Riley Fite, interest in American prosperity and leadership comes naturally. Riley, the son of Lance and Jayme Fite, attends Safford High School. He has a passion for the agriculture industry in rural America and is a big supporter of FFA. He has earned awards locally and statewide in dairy evaluation and livestock evaluation, including the 2013 National Dairy Silver Team award. He has served in FFA leadership as greenhand president, chapter treasurer and most recently serves as Safford chapter vice president.

Riley prides himself as a responsible, trustworthy young man who works hard and accomplishes goals. He considers himself to be a fast learner and strives for success. He plans to attend Texas A&M University in College Station, Texas, and earn a degree in agricultural business management.

Riley's reference letter notes he is an excellent student and citizen. He brings energy, enthusiasm and a willingness to work hard into all of his pursuits.

Riley stated in his entry essay, "Being able to walk into the kitchen and turn on a light late at night is a blessing and being able to have electricity in the rural part of America has definitely increased the quality of life and made certain everyday tasks much easier to complete."

### Marissa Green

Marissa Green's essay describes life in modern America as being much different than it was in 1933, with the electrification of farms in rural areas serving as the catalyst to progress. She writes that thanks to electric cooperatives providing the lowest possible price of electricity to even the poorest farmers, it is no longer a hassle for farmers to work after dark, thereby boosting production and prosperity in rural America.

The Thatcher High School student is the daughter of Dan and Marcie Green. She is friendly, dependable, conscientious, hard working and studious.

Marissa was the THS Student of the Year in 2012-13 and participates in a number of school activities, such as spirit club, athletic club, green club, Spanish club, Students Against Destructive Decisions club

and THS Leadership Class.

Her recommendation letter says she has a talent for looking at a situation and immediately going to work to accomplish the task at hand.

Marissa enjoys activities including cross country running, show choir, performing on the piano and violin, and teaching piano and violin. Her interests are crafts, music, nutrition, exercise and learning.

### **Lindy Lunt**

Lindy Lunt is the daughter of Melissa and Lonni Lunt, and attends Pima High School. Lindy is interested in politics and seeing how our government works. She is involved with her community through organizations and events such as Turkey Trot and Relay For Life, and participates in service projects with her church by knitting hats for infants at the hospital.

Lindy says her great-grandmother told her she remembers finishing her schoolwork by candlelight at her kitchen table when she was a girl, but that changed when the co-op came to town.

Having placed first in state Future Business Leaders of America Principles and Parliamentary Procedures, Lindy is excited to see government at work in Washington. Among her other achievements, Lindy completed a swim from Alcatraz Island to San Francisco and a half marathon for which she donated the proceeds to the Ryan House Foundation. Exceeding the AIM's in science, reading and math, she also stays involved in FBLA, TOP, SADD, HOSA Future Health Professionals, and holds leadership positions in her church.

### **Heather Udall**

Heather Udall, daughter of Kristie and David Udall attends Thatcher High School. In her essay, she says she wonders how many people have flipped on the light switch or watched TV without a thought to how electricity came to be. The formation of electric co-ops has resulted in accessibility of electricity in rural communities across the U.S.

Heather's letter of recommendation states, "She is an excellent example of the kind of future leaders this community needs. The attributes she magnifies because of her loyalty, her willingness to work hard and her service-oriented attitude will serve her well as she continues through life. She is not afraid to ask

for help or give it when the need arises."

Heather loves running, spending time outdoors and camping with her family. She loves creating things, whether through baking, writing, music, reading or styling hair.

She placed first in a Spanish skit at Eastern Arizona College for skills day.

Heather says she wants to get to know other students on the tour. She is passionate about learning more about the founding fathers and how cooperation can make the U.S. a better place.

### **Weston Wiltbank**

According to Weston Wiltbank, cooperatives in rural America have had a large impact on farming and ranching but, more importantly, have changed the way we live our lives. Living in rural America, Weston has seen the blessings and prosperity electricity has brought into his own life and how it has shaped rural America.

Weston, the son of Sasha and Brent Wiltbank, and a Safford High School student, demonstrates hard work and dedication in all aspects of his life. He serves as FFA chapter sentinel and has served on many local, state and national FFA competition teams.

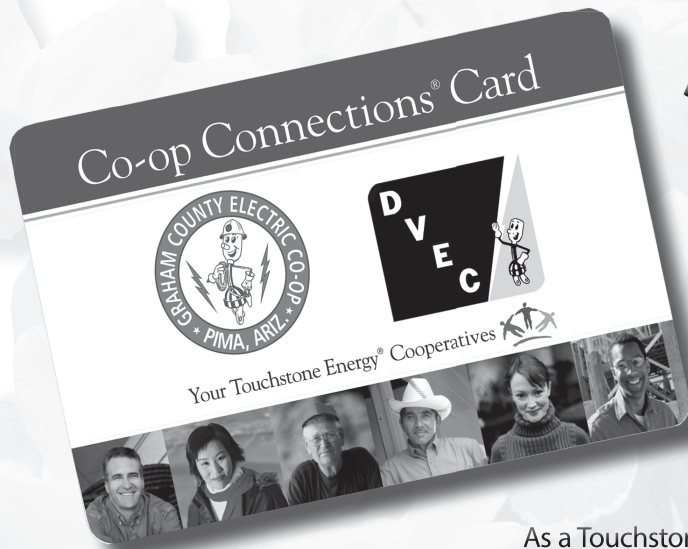
He enjoys participating in football and basketball and serving in the Boy Scouts of America, through which he received the athlete of the year award, along with Life Scout.

He believes in respecting, not only others, but ourselves. He seeks out attributes featured in the Boy Scout Law, such as kindness, loyalty and bravery.

Weston's reference letter states, "Weston never leaves a rock unturned and strives to be the best at everything he does. He demonstrates great leadership qualities and will be a true ambassador for Safford and the agricultural industry."

Weston plans to serve a two-year mission for the Church of Jesus Christ of Latter-day Saints and then attend Arizona State University and Texas A&M to study dentistry.

As they learn the importance of being active participants in our democracy and how to contribute to rural America, these students will be great ambassadors for GCEC and our community. ■



## Spring Into Savings!

It is important for Graham County Electric to provide its members with safe, reliable power. Yet our service goes beyond the wires. It also is important to offer additional value that has a positive effect on everyone in the community.

As a Touchstone Energy cooperative, GCEC strives to meet that goal every day. That is why GCEC, in conjunction with other Touchstone Energy cooperatives, participates in the Co-op Connections program. This card-based member benefit program delivers added value to members by offering valuable savings at participating local and national businesses.

Whenever a Co-op Connections cardholder—whether from GCEC or one of the hundreds of Touchstone Energy co-ops across the country—shows the Co-op Connections Card at a participating business, they receive a discount. Businesses benefit from increased customer visits by co-op members.

Simply show your Co-op Connections Card at a participating business and receive a discount!

Pharmacy discounts have saved members across the nation more than \$36 Million since the program was introduced. Graham and Greenlee County members' savings:

- In 2011 \$15,873.94 for 33 percent average savings
- In 2012 \$15,776.88 for 42 percent average savings
- Thru Oct. 2013 \$12,633.55 for 41 percent savings
- Grand Total of \$44,284.37 savings in less than three years for 38 percent average savings

Simply visit [www.rspricequotes.com](http://www.rspricequotes.com) to see if your medication name, strength and quantity qualifies for a discount\*. Your Co-op Connections Card pharmacy discounts are available at Walgreens, Wal-Mart, Thriftee Drug, Safeway, Medicap, Willcox Health Mart, Food City and United Drug.

To view the entire Co-op Connections Card Program, visit [www.connections.coop](http://www.connections.coop).

*\*Discount card cannot be used in conjunction with insurance plans and depends on drug name, strength and quantity*

# Steps to Cooking Efficiently



When using air conditioning, use smaller cooking appliances outdoors, if possible.



To ask a question, write to **James Dulley**, Energy Report, 6906 Royalgreen Dr., Cincinnati, Ohio 45244, or check his Web page, [www.dulley.com](http://www.dulley.com).

Copyright 2014, James Dulley

*Q: I am updating my kitchen appliances. What are the best and most efficient appliances for cooks? Do you have any energy-efficient cooking tips?*

**A:** If you are a frequent cook, you consume a lot of energy. The major energy user is the refrigerator. Odds are if you prepare a lot of food, you have a large refrigerator and open it often. Place commonly used items, such as milk and butter, near the front of your fridge. Keep the fridge fairly full. Use water jugs, if needed.

In addition to selecting efficient cooking appliances, there are simple tips to cut your energy use. Keep in mind cooking tips change from winter to summer.

During winter, the heat and humidity from cooking help warm your house and reduce the heating load on your furnace or heat pump. During summer, this same heat makes your air conditioner run more, increasing electric bills.

When installing kitchen appliances, locate them properly. The cooking range and oven should not be directly next to the refrigerator. Their heat makes the refrigerator compressor run longer. Also, don't put the range or oven under a window. A breeze can carry away heat before it gets into your pots and pans.

The most efficient electric range heating elements are induction units. These elements produce magnetic energy, which warms magnetic (usually iron and steel) pots and pans. If no utensil is on an induction element, the element does not get hot. Induction elements provide heating control almost as precise as gas burners.

Induction elements offer an energy advantage. Nearly all of the energy goes into the pot or pan to heat food. With a regular resistance element, the heat transfers from the range top to the base of the pot. A lot of heat is lost to the air, never getting to the food.

Since you do not always want to use magnetic cooking dishes, your range

should have only one or two induction elements. The others should be standard resistance or halogen. Halogen elements heat up faster, but are not as efficient. Opt for different sizes, then match the size of the pot to the element size for less heat loss.

Most professionals prefer electric ovens, which hold more even heat than gas when baking. Another advantage, especially during summer, is that electric ovens do not introduce extra moisture to your house. Extra moisture means more work and energy use for your air conditioner. When gas or propane burns, the basic products of combustion are water and carbon dioxide.

A convection oven saves energy compared with a standard oven. Even though the small air circulation fan uses some electricity in a convection oven, these ovens cook so much faster that there is significant overall savings.

Not all foods roast and bake well in the convection mode, so you will not be able to use it for everything. Choose a self-cleaning oven model because they often have heavier wall insulation needed for the high cleaning temperature.

Want great energy savings in the kitchen? Use small countertop appliances when possible. For example, a small toaster oven, especially one with a convection option, uses significantly less electricity than large oven elements. This is true even though the large oven has more wall insulation. Countertop electric woks, rice cookers, etc., are other good examples. During summer, use them outdoors to reduce indoor heat.

Microwave ovens are still the most efficient appliance for cooking individual food items. They run on lower wattage and offer short cook times. However, if you cook larger quantities of food, a large oven remains the best choice.

Plan your baking to make similar-baking-temperature foods simultaneously or consecutively while the oven is hot. ■



P.O. Drawer B  
Pima, AZ 85543

(928) 485-2451  
Toll free: (800) 577-9266

Fax: (928) 485-9491

**Graham County Electric Board of Directors:**

President Gene R. Larson  
Vice Pres. Reuben McBride  
Secretary Tommy Clonts  
Chris Claridge  
Gerald Schmidt  
Dennis Jacob  
Jerald L. Kempton  
Jim Bryce  
Robert Reed

**Graham County Utilities Board of Directors:**

President Jeff B. Larson  
Vice President Jim Bryce  
Secretary Mike Crockett  
Tommy Clonts  
Dennis Jacob  
Gene R. Larson  
Jerry Kempton  
Larry H. Morris  
Bob Brown

**General Manager:**

Steve Lines



Touchstone Energy®

*The power of human connections*

AZ-145 **Postmaster:** Send address changes to Currents, 2210 S. Priest Dr., Tempe, AZ 85282-1109

**Manager's Message**

**We Need Your Help Again!**

One of the hats I wear in addition to the general manager's cap for the members, directors and employees of Graham County Electric Cooperative is as chairman of the Legislative and Governmental Affairs Committee for Grand Canyon State Electric Cooperative Association.

I wear that hat proudly. It means I am working with a group of cooperative leaders from around the state who know our cooperatives are doing the job of not just delivering electric power to members, we are doing what we have always done: improving our communities and our members' way of life.

The Legislative and Governmental Affairs Committee guides the staff at GCSECA on all things governmental and political. Since the electric cooperatives are hours away from the state capitol and thousands of miles away from Washington, D.C., we rely on GCSECA staff to carry our message to our elected officials.

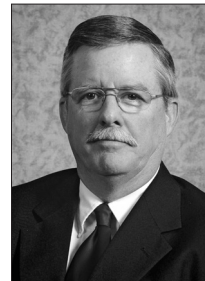
Because it isn't practical or cost-effective for each cooperative to hire and face the costs associated with individual lobbyists, so we work together.

We support policies and legislation that benefit our members. Although we are nonpartisan, that does not mean we are apolitical. We work to ensure we support elected officials who understand our industry and will fight to help our members and rural Arizona.

I am reminded of a quote by our national organization's former CEO, Glenn English, who served 10 terms as a U.S. representative in Congress for Oklahoma. English said, "This (rural electrification) program was born in politics and will die in politics. And I vowed it wouldn't die on my watch."

English shares my passion for a business model that has done much for rural America. Cooperative officials have a long history of fighting to ensure co-op members are treated fairly. Our members deserve nothing less.

The last several years, many electric cooperatives around the country celebrated their 75th anniversaries. These milestones demonstrate that the co-op utility business model—democratically elected directors and the commitment to the member-owned—has fulfilled their founding charters of turning the lights on. Co-ops continue the magic of improving lives daily.



**Steve Lines**